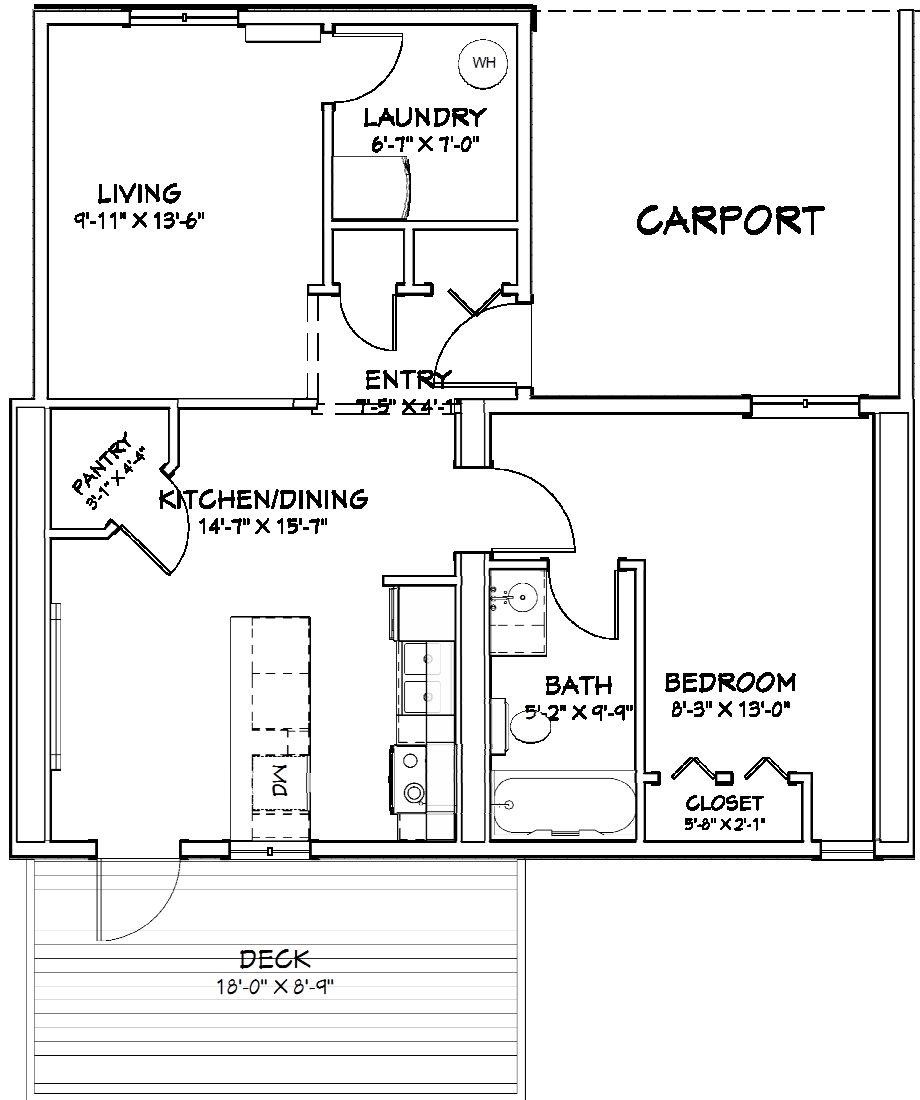


PHASE III: UNITS #9-12 | \$184,900 - \$189,900 1 BDRM. 1 BATH. 780-820

UNIT FEATURES

ALL UNITS

- Covered Carport
- 8' deck facing south with a 5' privacy fence
- Large storage locker (same bldg.)
- Single garden door to deck w/ mini blinds
- Main entrance 1/2 glass/mini blinds
- Stainless Steel Appliances
- Stackable W & D (laundry room)
- Dishwasher
- 40 G Hot Water Tank
- Air Conditioning
- HVAC
- Corner Pantry
- Galley kitchen with 10" overhang
- Thermofoil Cabinetry
- Tile backsplash
- 12 mm Laminate flooring throughout
- Vinyl plank at entry and laundry room
- Oil rubbed bronze fixtures



CONDOMINIUM PRICE, DEPOSITS AND OCCUPANCY

The purchase price starts at \$184,900. A \$5,000 initial deposit is required to hold interest in the unit with the balance of \$45,000 due within 60 days. Total Deposit \$50,000. Occupancy is based on the date of deposit.

WHAT IS INCLUDED IN THE PRICE

The purchase price includes your individual bareland condo unit (own the unit and the land on which it is built) and a share of the common elements. The common elements are made up of all property and buildings that are not individual units. Condo fees are the cost of operating and maintaining the common elements as well as monthly contributions to the reserve fund. Condo fees are estimated at \$192 per month, which includes \$39 for the monthly reserve fund (\$153 + \$39). A reserve fund is a separate trust account, which is a savings account for future major repair and replacement costs. Owners are responsible for their own property taxes, content insurance, hydro, water, telephone and internet.